



# Public Consultation

City Forests' New Land and Forest  
Acquisitions - 2025

## Purpose

The purpose of this document is to provide information to stakeholders and the general public about new land and forest purchases now under City Forests ownership. By consulting with stakeholders and the public City Forests satisfies Forest Stewardship Council® (FSC®- C008934) obligations to extend the scope of the certification to include all the new land acquisitions covered in this document.

## Company Strategy

In recent years City Forests has made new land investments that aim to deliver greater financial, social and environmental returns to the shareholder by increasing the productive forest area. These are wise land investments in terms of location, scale, productivity, supply chain and risk.

City Forests was amongst the first major forest owners to embrace the Emissions Trading Scheme (ETS) and has led the industry in recycling carbon revenues into new land plantings. The company's strategy is to continue to invest in the same way; principally by recycling carbon revenues into good quality land and high-quality tree stocks. These new plantings will also mean greater carbon stocks for the company in the future as the trees continue to sequester carbon from the atmosphere.

All new land purchases are on better than average sites that improve productivity and reduce environmental, financial, and health & safety risk. The new areas are also within City Forests current working circle and remain close to domestic and export markets.

Through this self-funded investment and the continued support of our shareholder, City Forests has a growing capital asset that is continuing to increase in value and deliver substantial and sustainable returns to the shareholder as well as long term benefits to the environment.

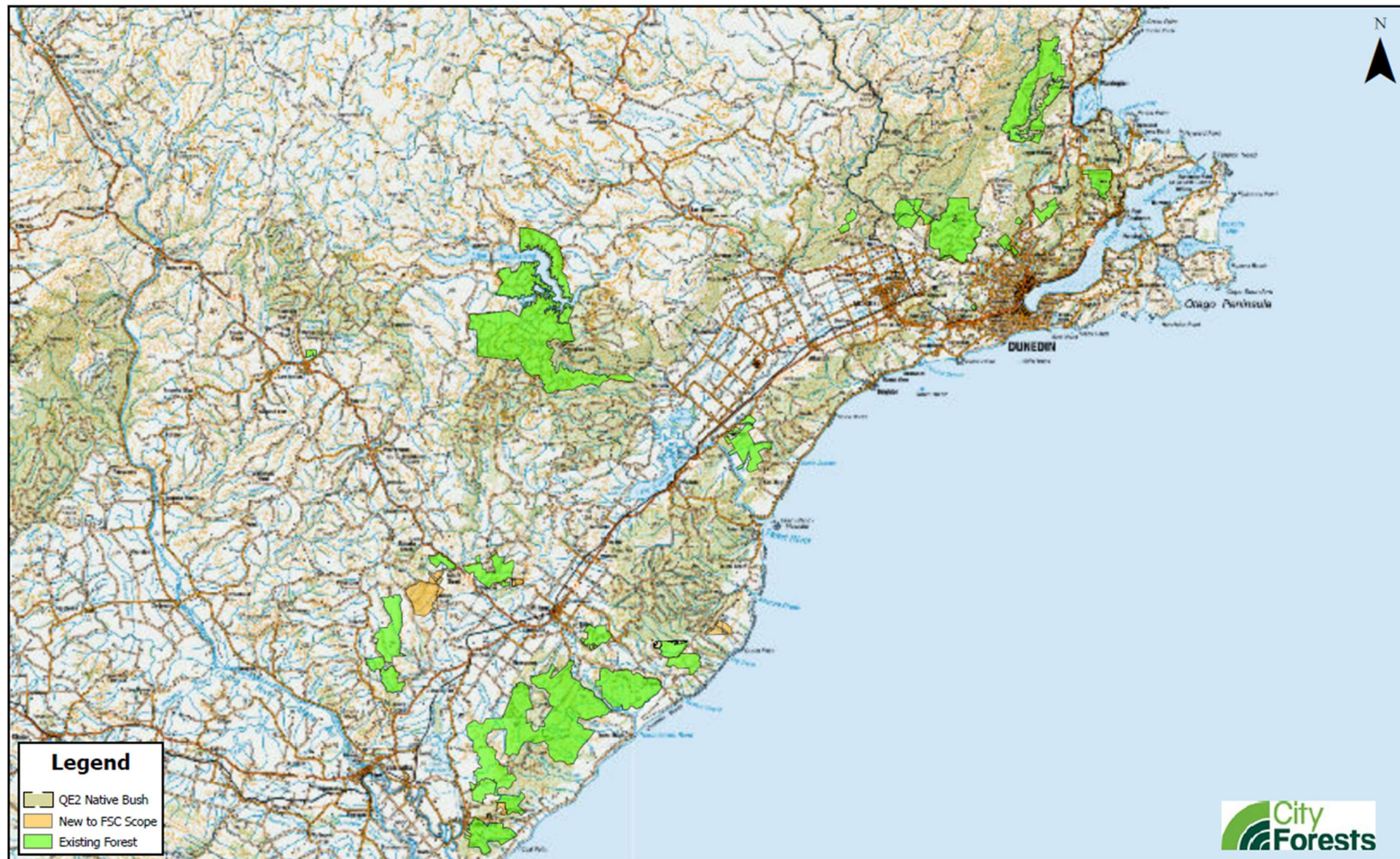
## Background

4 properties totaling 1044.4 hectares have been added to City Forests total working area of 24,200.1 hectares. The new land is spread across three main working forest areas; Millers, Tokoiti and Glenledi. There are a range of previous land uses on the new land including plantation forest, pasture, dense woody weed cover and native bush.

Establishing forests on new land involves a significant amount of preparation and planning. Considerations are made around planting setbacks from waterways, conservation land, neighbours and existing infrastructure such as roads, waterpipes and powerlines.

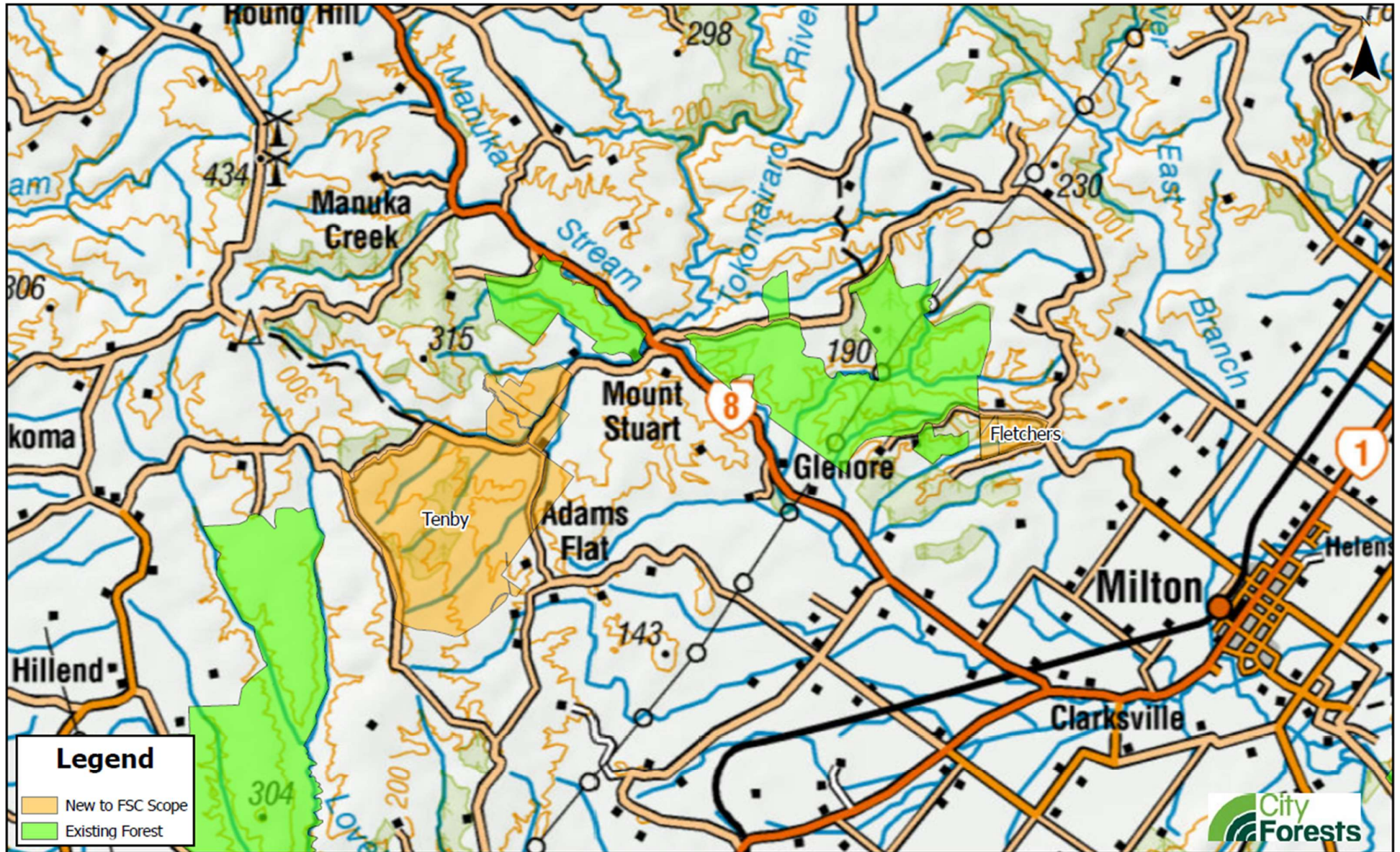
All new land areas with significant natural areas are independently assessed in order to identify the areas ecological significance. These areas will be protected and progressively enhanced under City Forests' management through ongoing monitoring, the removal of grazing animals and the control of weeds.

## City Forests FSC Overview





# Millers FSC Area



## Millers

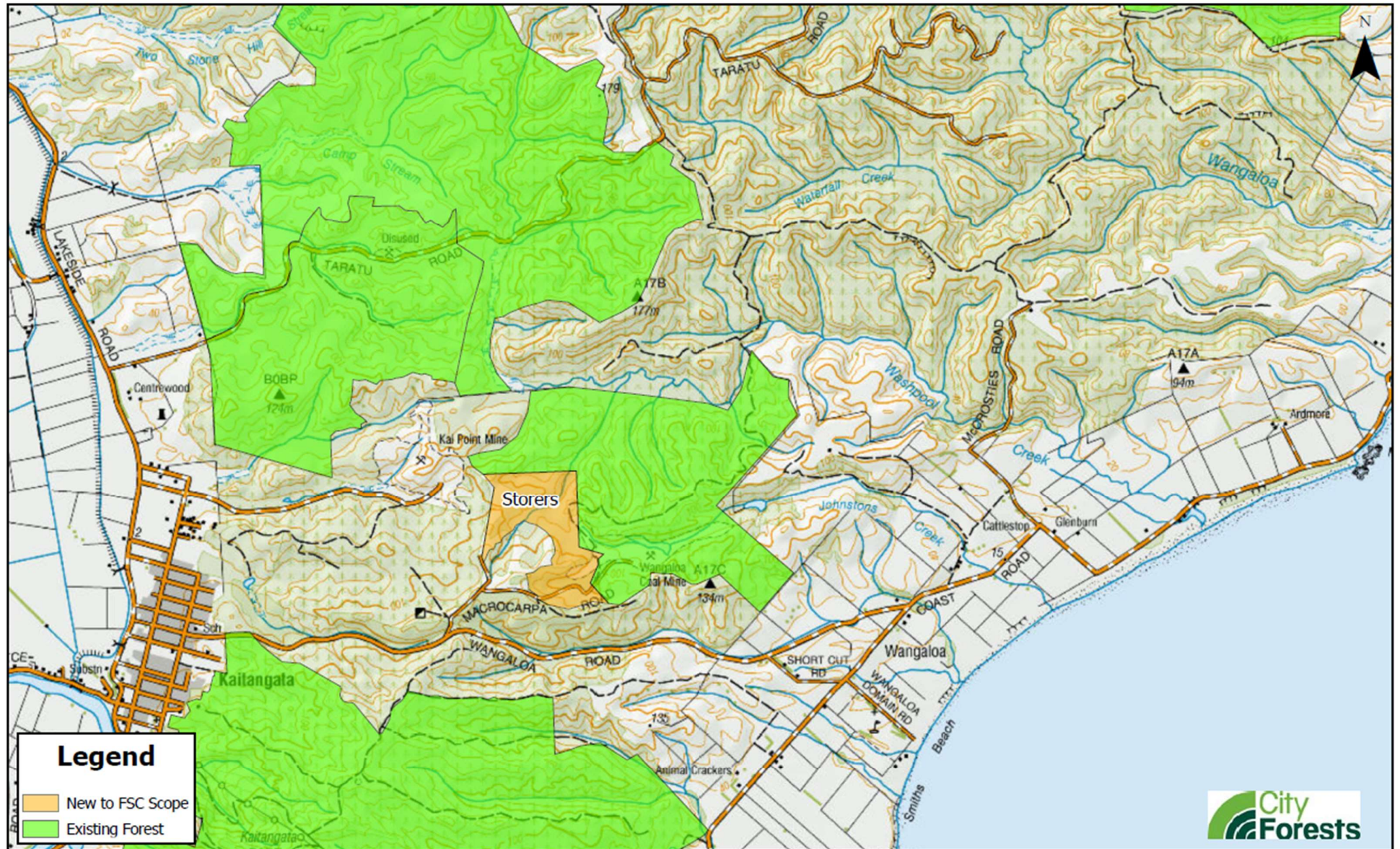
Two new properties totalling 807.4 hectares add to City Forests' already existing Millers forest. Located 8km northwest of Milton; Millers is a scattered collection of forest blocks crossing into both the Lawrence and Tokomairiro Ecological Districts.

The new western property (Tenby) on Falla Burn Road is an area of predominantly ex-pasture, with a mix of various age-class woodlots comprised of exotic species. The new eastern property (Fletchers) on Table Hill Road is also ex-pasture with scrub weeds and scattered exotic and native tree species present.

These new properties have now been planted with *Pinus radiata*. Setbacks have been put in place for powerlines, waterpipes, neighbours, roads and waterways. Tenby contains two dwellings that will be subdivided off at a future date as small farm holdings. Planting has been set back appropriately from the proposed subdivision boundaries. New roading infrastructure has been constructed in Tenby to give access for establishment and future operations, this has consisted of tidying up and extending existing tracks, as well as new road formation.



## Tokoiti FSC Area



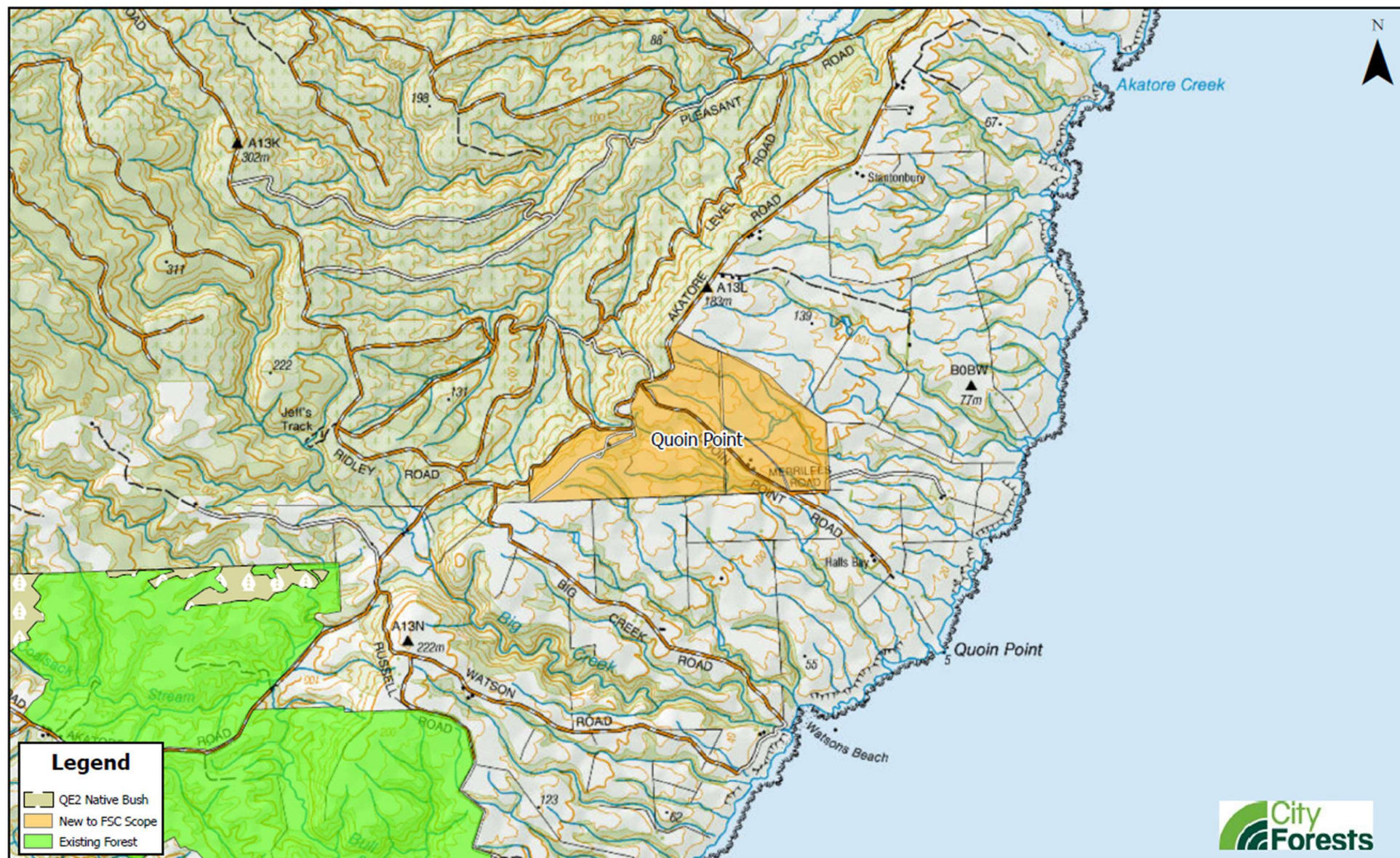
## Tokoiti

One new property (Storers) has been added to the existing Tokoiti Forest, and is located in the Tokomairiro Ecological District. Storers, located in Kaitangata in the hills 2 km east of the township, comprises 57.4 ha and fills in an area contained already within the City Forests estate and exotic plantations under other ownership. This property contains areas of ex-pasture, scrub weeds, and areas of regenerating native bush. Native bush will remain untouched (apart from weed control) to continue regenerating into the future. These areas are planned for assessment in 2025 by an independent ecologist to determine their ecological value and condition. Scrub weeds (gorse and broom) have where possible been removed to allow plantation forest to grow. This property has now been planted with *Pinus radiata*.

Setbacks have been put in place for neighbours, roads and waterways. Minor new roading infrastructure has been constructed to give access for establishment and future operations. This has primarily been a combination of tidying up and extending existing tracks.



## Tokoiti FSC Area





## Glenledi (Tokoiti)

One new property (Quoin Point) has been added to the existing Glenledi Forest, and is located 13 km east of Milton, in the Tokomairiro Ecological District. The property is 179.6 ha and comprised of ex-pasture, exotic forest, exotic weeds and scrub, and native scrub and forest. Approximately 15 ha of regenerating native scrub and forest on the property will remain untouched (apart from weed control) to continue regenerating into the future. These areas are planned for assessment in 2025 by an independent ecologist to determine their ecological value and condition. Exotic weeds and scrub (gorse and broom) have where possible been removed for plantation forest to establish.

This property has now been planted with *Pinus radiata*. Setbacks have been put in place for powerlines, waterpipes, neighbours, roads and waterways. Quoin Point contains one dwelling that will be subdivided off at a future date as a small farm holding. Planting has been set back appropriately from the proposed subdivision boundaries. No roading has been constructed in this new land area to date, but will be in the future down main ridges to give access for operations.

## Feedback

City Forests invites feedback on our proposal to extend the scope of our FSC® certificate through our website.

[www.cityforests.co.nz](http://www.cityforests.co.nz)